

SOYBEANS



S19-Y5E3 BRAND

RM:
1.9

CHU:
2950



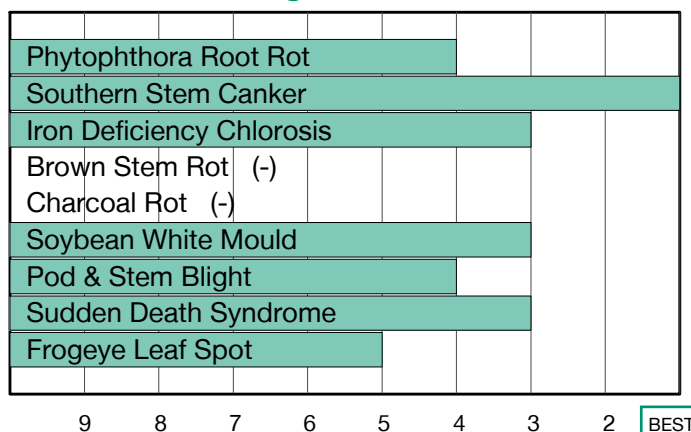
Strong Performance Across Yield Levels and Soil Types

- Very good tolerance to Sudden Death Syndrome
- Very good Soybean White Mould tolerance
- Maintains plant height across acres with strong standability

Plant Characteristics

Plant Height	Medium-Tall
Canopy Index	4.95
Branching	Moderate
Growth Habit	Indeterminate
Flower Colour	Purple
Pubescence Colour	Light Tawny
Pod Colour	Brown
Hilum Colour	Black
Chloride Sensitivity	-

Disease Ratings



Agronomic Traits

Emergence	3
Standability	3
Shatter Tolerance	2
Green Stem	2
Estimated Seed Size	Medium
Protein	High
Oil	High
Narrow Rows	1
Wide Rows	1
Metribuzin Response	-
Sulfentrazone Response	-

Adaptation to Soil Types

Drought Prone	Fair
High pH*	Good
Highly Productive	Best
Moderate/Variable Environments	Good
Poorly Drained	Good

Diseases and Pests

Phytophthora Root Rot (PRR) Source	Rps1k
Soybean Cyst Nematode (SCN) Races	R3, MR14
(SCN) Source	PI88788
Root Knot Nematode (RKN) Incognita	-

For more information: Visit syngenta.ca, contact our Customer Interaction Centre at 87-SYNGENTA, or follow @NKSeedsCanada on Twitter.

1-9 Scale: 1 = Best, 9 = Worst, (-) = Not Available.
Adaptation and Responses: Best > Good > Fair > Poor.

Protein and Oil: Ultra High > Very High > High > Average > Low.
Canopy Index: Reflects plant height, width and branching. 1 = Smallest, 9 = Largest.



Seed products with the LibertyLink® (LL) trait are resistant to the herbicide glufosinate ammonium, an alternative to glyphosate in corn and soybeans, and combine high-yielding genetics with the powerful, non-selective, postemergent weed control of Liberty® herbicide for optimum yield and excellent weed control.

* Represents an assessment of stand establishment, chlorosis severity and yield performance

Performance evaluations are based on field observations and public information. Data from multiple locations and years should be consulted whenever possible. Individual results may vary depending on local growing, soil and weather conditions. IMPORTANT: ALWAYS READ AND FOLLOW SEED BAG/TAG DIRECTIONS.

BASF, LibertyLink®, Liberty® and the Water Droplet logo are registered trademarks of BASF Group. Only seed labeled as tolerant to glufosinate may be sprayed with glufosinate ammonium based herbicides. Only 2,4-D choline formulations with Colex-D® Technology are approved for use with ENLIST E3® soybeans. The transgenic soybean event in ENLIST E3® soybeans is jointly developed and owned by Corteva Agriscience LLC and MS Technologies LLC. ENLIST® and ENLIST E3® are registered trademarks of Corteva Agriscience LLC. Trademarks and service marks are the property of their respective owners. © 2023 Syngenta.